

## BRAIN AND SPINE

2009

## OVERVIEW

This conference will review the latest medical and surgical approaches to the diagnosis, treatment, and prevention of neurological illnesses in the adult and pediatric community.

## COURSE DIRECTORS

Susan C. Pannullo, MD  
Joseph Safdieh, MD  
Theodore H. Schwartz, MD

## COURSE MANAGER

Amy Sabek (212.585.6822), email: [ams2008@nyp.org](mailto:ams2008@nyp.org)

## DATE AND TIME

Friday, May 15, 2009 7:00AM–6:00PM  
(7:00–7:20AM Registration/Breakfast)

## LOCATION

Weill Cornell Medical College  
Uris Auditorium  
1300 York Avenue  
New York, New York 10065

## COURSE FORMAT

Lectures, panels, questions and answers sessions.

## STATEMENT OF NEED

Over the past few years, significant advances have been made in the diagnosis and treatment of neurological conditions, both medically and surgically. This course is designed to provide a comprehensive overview of these advances for the primary care provider. By attending this course, participants will be better able to care for patients with neurological illness.

## TARGET AUDIENCE

This course is designed for the non-neurologist. Internists, family practitioners, psychiatrists, as well as physician assistants, nurse practitioners, residents, fellows and other allied health professionals who specialize in the treatment and diagnosis of neurological illnesses in the adult and pediatric community.

## EDUCATIONAL OBJECTIVES

It is intended that this Weill Cornell CME activity will lead to improved patient care. At the conclusion of this activity, participants should be able to:

1. Diagnose and treat common and important neurological conditions
2. Determine when neurological or neurosurgical referral is appropriate
3. Be well versed in recent developments in the fields of neurology and neurosurgery

## COURSE AGENDA

7:00am BREAKFAST / REGISTRATION

7:20am WELCOME & OVERVIEW

Susan C. Pannullo, MD  
Joseph Safdieh, MD  
Theodore H. Schwartz, MD

7:30am CEREBROVASCULAR DISEASE

Stroke Prevention Update  
–Matthew E. Fink, MD  
Diagnosis and Treatment of Carotid Disease  
–Philip E. Stieg, PhD, MD  
Diagnosis and Treatment of Aneurysms  
–Howard A. Riina, MD  
Intravascular Treatment of Stroke  
–Pierre Y. Gobin, MD

9:15am DEMENTIA

Alzheimer Update  
–Norman R. Relkin, MD, PhD  
NPH Diagnosis and Treatment  
–Michael G. Kaplitt, MD, PhD

10:15am REFRESHMENT / BREAK

10:45am HEADACHE AND MULTIPLE SCLEROSIS

Update in Migraine Therapy  
–Dara G. Jamieson, MD  
Update in the Diagnosis of MS  
–Susan A. Gauthier, DO, MPH

11:50am TREMOR AND PARKINSON DISEASE

Update in PD and ET  
–Melissa J. Nirenberg, MD, PhD  
Surgical Treatment for PD  
Michael G. Kaplitt, MD, PhD

12:50pm LUNCH – Q&A with the Experts

## BRAIN TUMORS

1:50pm Overview of Brain Tumor Diagnosis and Therapy  
–Susan C. Pannullo, MD  
2:15pm Surgical Treatment of Brain Tumors  
–Theodore H. Schwartz, MD  
2:40pm Developing Novel Brain Tumor Treatments  
–John A. Boockvar, MD

## EPILEPSY AND SEIZURES

3:10pm Diagnosing Seizures versus Other Spells  
–Padmaja Kandula, MD  
3:35pm Surgical Treatments for Epilepsy: an update  
–Theodore H. Schwartz, MD

4:00pm REFRESHMENT / BREAK

## BACK PAIN

4:30pm Approach to Diagnosis and Conservative Rx  
–Joseph Safdieh, MD  
5:00pm Role of the Spinal Neurosurgeon in Back Pain  
–Roger Härtl, MD

## STATE OF THE ART NEUROSURGERY

5:30pm Novel Minimally Invasive Treatment Techniques in Neurosurgery: Less is More  
–Mark M. Souweidane, MD

6:00pm WRAP-UP/EVALUATION SUBMISSION

6:10pm ADJOURN

## FACULTY

John A. Boockvar, MD

Associate Professor of Neurological Surgery  
Weill Cornell Medical College  
Associate Neurological Surgeon  
NewYork-Presbyterian Hospital

Mathew E. Fink, MD

Attending Neurologist  
NewYork-Presbyterian Hospital  
Professor of Clinical Neurology  
Weill Cornell Medical College

Susan A. Gauthier, DO, MPH

Assistant Attending Neurologist  
NewYork-Presbyterian Hospital  
Assistant Professor of Neurology  
Feil Family Clinical Scholar in Multiple Sclerosis  
Weill Cornell Medical College

Pierre Y. Gobin, MD

Attending Radiologist  
NewYork-Presbyterian Hospital  
Professor of Radiology in Neurological Surgery  
Professor of Radiology in Neurology  
Weill Cornell Medical College

Roger Härtl, MD

Leonard and Fleur Harlan Clinical Scholar  
Assistant Professor of Neurological Surgery  
Weill Cornell Medical College

Dara G. Jamieson, MD

Associate Professor of Clinical Neurology  
Weill Cornell Medical College

Padmaja Kandula, MD

Assistant Attending Neurologist Neurologist  
NewYork-Presbyterian Hospital  
Assistant Professor of Neurology  
Weill Cornell Medical College

Michael G. Kaplitt, MD, PhD

Associate Attending Neurosurgeon  
NewYork-Presbyterian Hospital  
Associate Professor of Neurological Surgery  
Associate Professor of Neurological Surgery in Neurology  
Associate Professor of Neurological Surgery in Otorhinolaryngology  
Vice Chairman For Research, Neurological Surgery  
Weill Cornell Medical College

Melissa J. Nirenberg, MD, PhD

Assistant Attending Neurologist  
NewYork-Presbyterian Hospital  
Assistant Professor of Neurology and Neuroscience

Susan C. Pannullo, MD

Assistant Attending Neurological Surgeon  
NewYork-Presbyterian Hospital  
Assistant Professor of Clinical Neurological Surgery  
Director Of Neuro-oncology  
Director Of Neurosurgical Radiosurgery  
Weill Cornell Medical College

Norman R. Relkin, MD, PhD

Associate Attending Neurologist  
NewYork-Presbyterian Hospital  
Associate Professor of Clinical Neurology and Neuroscience  
Weill Cornell Medical College

Howard A. Riina, MD

Associate Attending Neurological Surgeon  
NewYork-Presbyterian Hospital  
Associate Professor of Neurological Surgery  
Associate Professor of Neurological Surgery in Neurology  
Associate Professor of Neurological Surgery in Radiology  
Co-director Interventional Neuroradiology  
Director Neurological Surgery Residency Program  
Weill Cornell Medical College

Joseph Safdieh, MD

Assistant Attending Neurologist  
NewYork-Presbyterian Hospital  
Assistant Professor of Neurology  
Co-director, Neurology Clerkship  
Medical Director, Neurology Clinic

Theodore H. Schwartz, MD

Associate Professor of Neurological Surgery in Neurology  
Associate Professor of Neurological Surgery in Otorhinolaryngology  
Weill Cornell Medical College

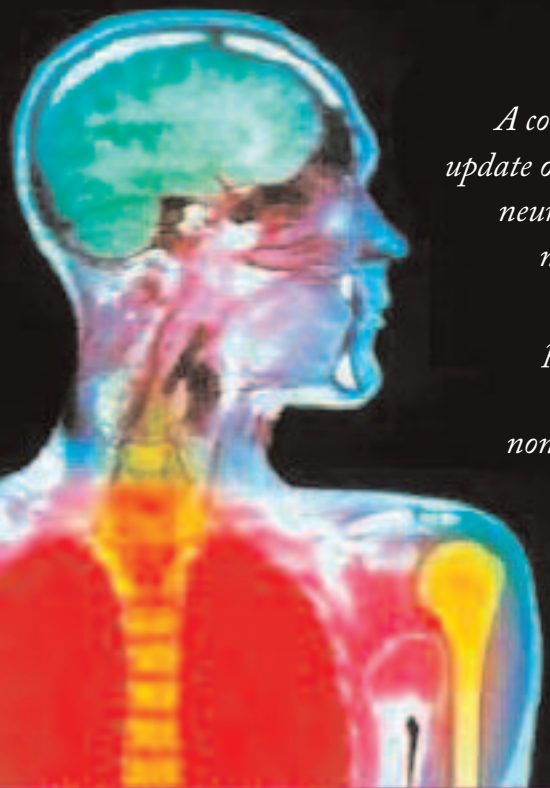
Philip E. Stieg, PhD, MD

Chairman of Neurological Surgery  
Professor of Neurological Surgery  
Weill Cornell Medical College  
Neurosurgeon-in-Chief  
NewYork-Presbyterian Hospital

Mark M. Souweidane, MD

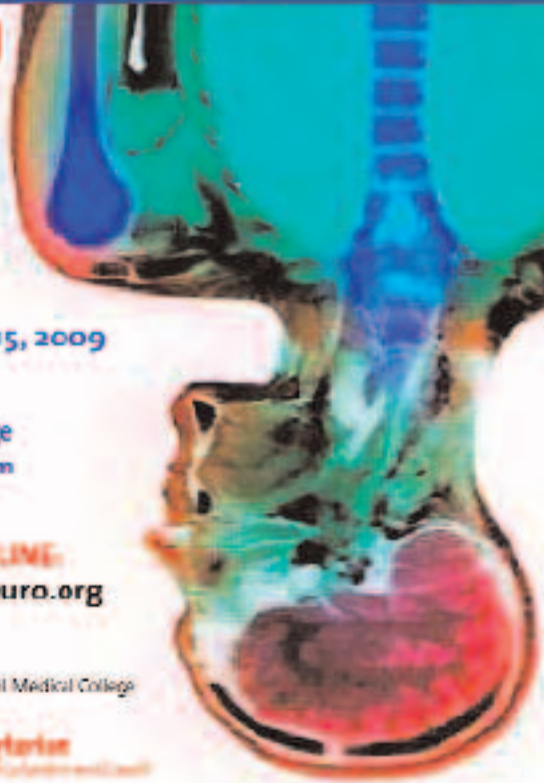
Attending Neurological Surgeon  
NewYork-Presbyterian Hospital  
Professor of Neurological Surgery  
Professor of Neurological Surgery in Pediatrics  
Vice Chairman Of Neurological Surgery  
Weill Cornell Medical College

*A comprehensive update on important neurological and neurosurgical topics for the primary care physician/non-neurologist*



## BRAIN AND SPINE

# 2009



Friday, May 15, 2009

Weill Cornell  
Medical College  
Uris Auditorium  
New York, NY

REGISTER ONLINE:  
[www.nypneuro.org](http://www.nypneuro.org)



NewYork-Presbyterian  
Hospital

**NewYork-Presbyterian Hospital**  
525 East 68TH Street  
New York, New York 10065

NON-PROFIT ORG  
U.S. POSTAGE  
PAID  
PERMIT 1043  
NEW YORK, NY

### ACCREDITATION

Weill Cornell Medical College is accredited by the Accreditation Council for Continuing Medical Education to provide continuing medical education for physicians.

Weill Cornell Medical College designates this educational activity for a maximum of 8.5 AMA PRA Category 1 Credit(s)<sup>™</sup>. Physicians should only claim credit commensurate with the extent of their participation in the activity.

### FACULTY DISCLOSURE

It is the policy of Weill Cornell Medical College to adhere to ACCME Essential Areas, Policies, and Standards for Commercial Support and content validation in order to ensure fair balance, independence, objectivity, and scientific rigor in all its sponsored programs. All faculty participating in sponsored programs are expected to disclose to the audience any potential, apparent, or real conflict of interest related to their contribution to the activity, and any discussions of off-label or investigational uses of any commercial products or devices not yet approved in the United States. WCMC CME activities are intended to be evidence-based and free of commercial bias. If you feel this is not the case, please call the Office of Continuing Medical Education at 212-746-2631 to anonymously express any concerns.



## BRAIN AND SPINE

# 2009

### TUITION:

Tuition includes registration and course materials, coffee breaks and luncheon.

**REFUND POLICY:** A handling fee of \$20 is deducted for cancellation. Refund request must be received by mail one week prior to the course. No refund will be made thereafter.

### TO REGISTER:

Register ONLINE at [www.nypneuro.org](http://www.nypneuro.org)  
or FILL OUT and mail this registration card.  
Email inquiries: [medcourses@nyp.org](mailto:medcourses@nyp.org)

### DATE AND TIME:

Friday, May 15, 2009  
7:00AM-6:00PM

### LOCATION:

Weill Cornell Medical College, The Uris Auditorium  
1300 York Avenue, New York, NY 10065

### FEES:

Full Day Conference  
New York-Presbyterian Healthcare System Physicians  
NPs, PAs, Residents, and Fellows

\$150.  
\$125.  
\$ 75.

**Yes, I would like to attend.** (PLEASE PRINT ALL INFORMATION BELOW)

NAME: \_\_\_\_\_ DEGREE: \_\_\_\_\_

SPECIALTY: \_\_\_\_\_ AFFILIATION: \_\_\_\_\_

ADDRESS: \_\_\_\_\_

CITY: \_\_\_\_\_ STATE: \_\_\_\_\_ ZIP: \_\_\_\_\_

DAYTIME TELEPHONE: \_\_\_\_\_

EMAIL ADDRESS: \_\_\_\_\_

Please make checks payable to: New York-Presbyterian Hospital  
Atrn: Marketing Department • 525 E. 68th St., Box 51, New York, NY 10065

MAIL TO: New York-Presbyterian Hospital • Atrn: Marketing Department • 525 E. 68th St., Box 51, New York, NY 10065